

ITEM NO.	DESCRIPTION	QTY.
1	GROUND WIRE CONNECTOR	100

CATALOG NUMBER	DESCRIPTION
HGBKLJ35	GROUND WIRE CONNECTOR

CONDUCTOR	FIG. NO	B (MM/IN)	C (MM/IN)	K (MM/IN)	L (MM/IN)	N (MM/IN)	T (MM/IN)	RECOMMENDED TIGHTENING TORQUE IN LBS	HARDWARE	STUD HOLE SIZE	QUANTITY/PACKAGE	STRIP LENGTH (IN)
14 SCL 163(.0641) DIA.TD 6STR 467(.184) DIA. CU	1		10.0	6.0	31.6	5.6	1.8	45	1/4 UNF SLOTTED SET SCREW	#10	100	5/8

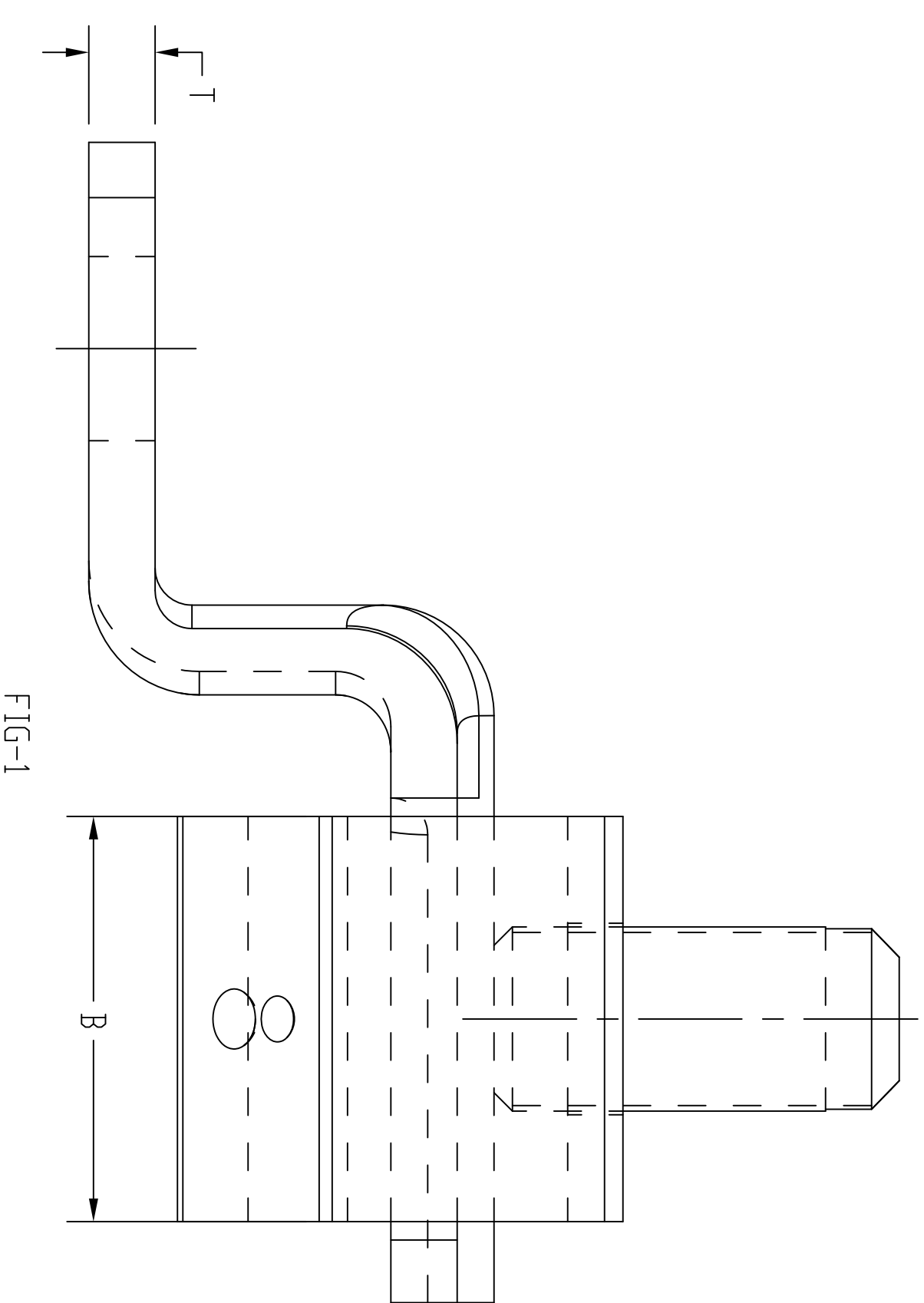
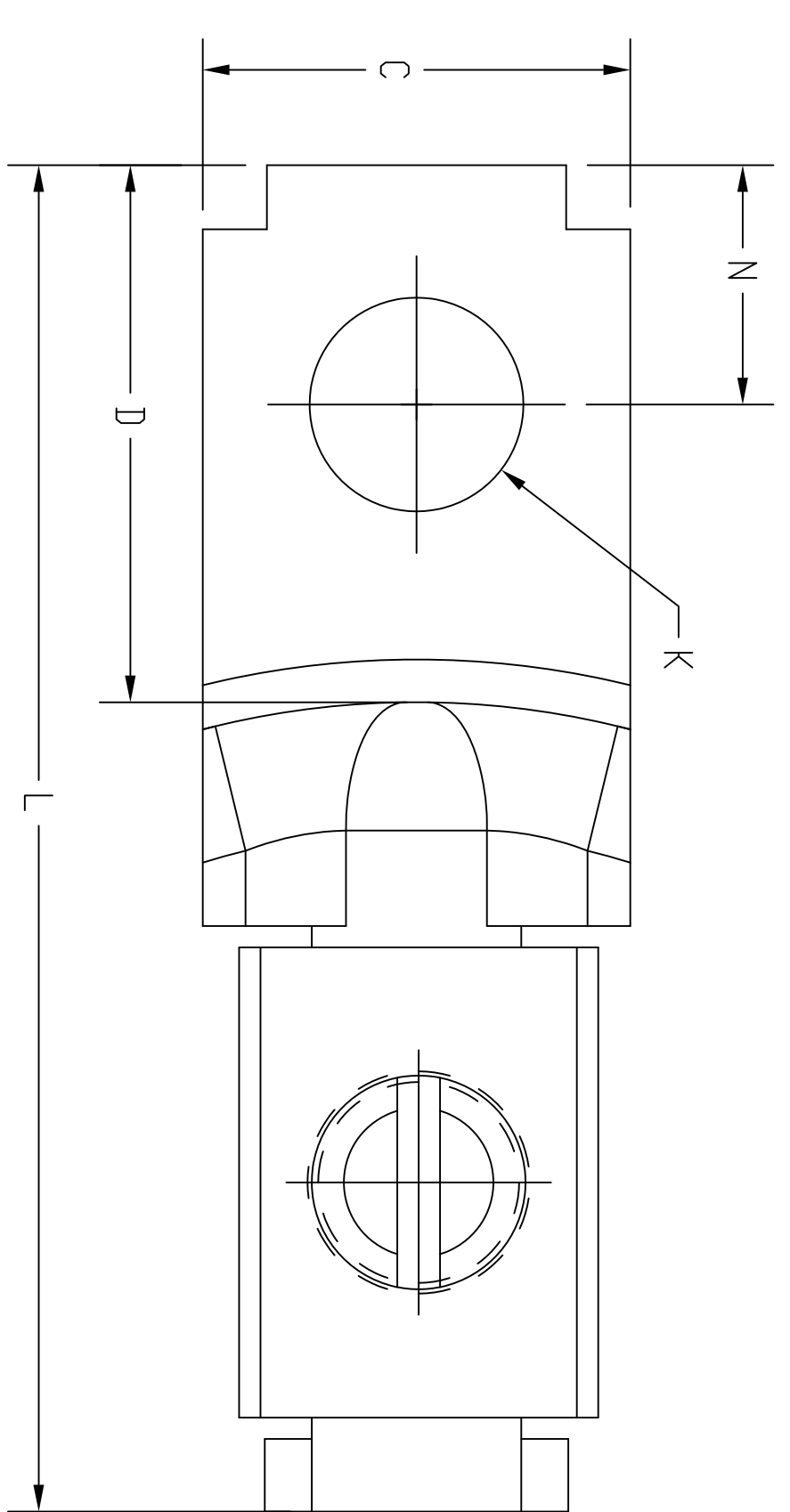


FIG--1

NOTES:
1. SPECIFICATIONS SUBJECT TO CHANGE WITHOUT NOTICE.

REV.	EON	DATE	DESCRIPTION	CHG BY	APPD BY
1	17862	3/5/12	INITIAL RELEASE	CG	

Created on AUTOCAD

HUBBELL
Hubbell Premise Wiring
HUBBELL INCORPORATED (Delaware)
14 Lord's Hill Road, Stonington, Connecticut 06378

PROJECT REFERENCE:
2011-041

MATERIAL:
COPPER ALLOY

DRAWN BY:
C. GRIBBLE 3/5/12

CHECKED BY:

APPROVED BY:

SIZE: D **DRAWING NO.:** HWS14029C **REV.:** 1

SCALE: 1/1 **SHEET:** 1 OF 1

TITLE:
GROUND WIRE TERMINAL, CU

DIMENSIONING AND TOLERANCE PER:
ANSI Y14.5M-1982
UNLESS OTHERWISE SPECIFIED,
DIMENSIONS ARE IN INCHES (MM).
TOLERANCES:
X = ±.03 (B)
XX = ±.02 (A)
XXX = ±.01 (S)
ANGLE TO .1°

IN ACCEPTING OUR DRAWINGS, BLUEPRINTS, OR SUPPORTING DOCUMENTATION FOR QUOTING OR OTHER PURPOSES, YOU AGREE NOT TO DISCLOSE TO OTHERS THE INFORMATION CONTAINED IN THESE DESIGNS SHOWN HEREIN, AND THAT YOU WILL MAKE NO USE OF SAME WITHOUT PERMISSION.